

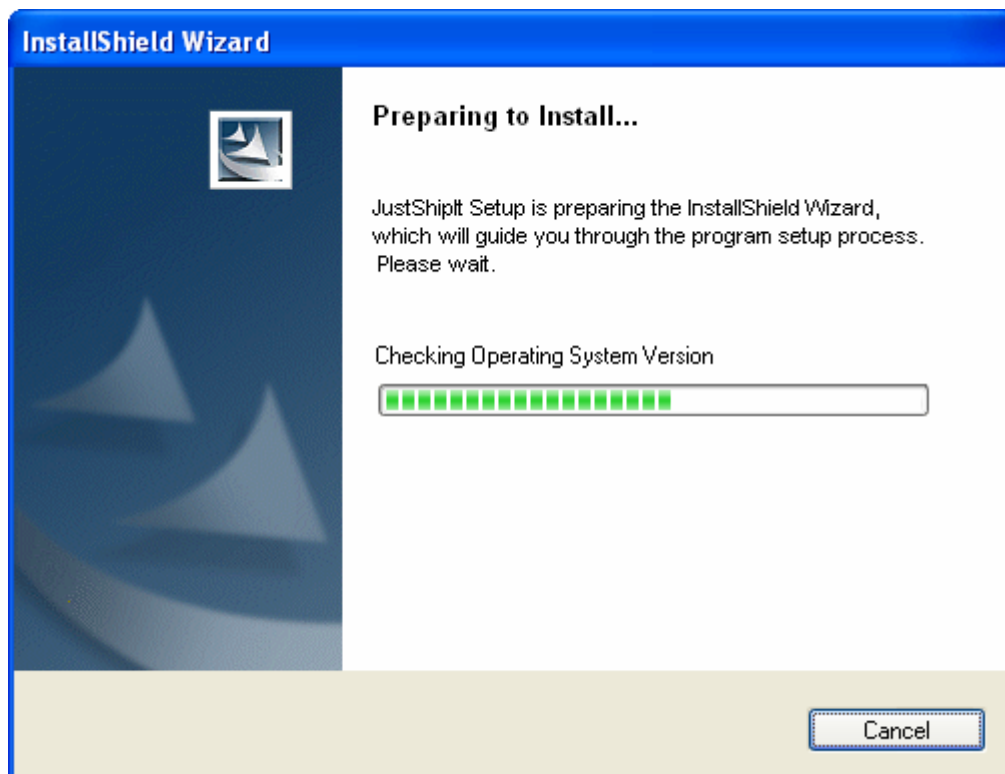
Loading Just Ship IT, this guide steps you through the setup of the application and the wizard.

Please use this easy to follow guide for a seamless installation.

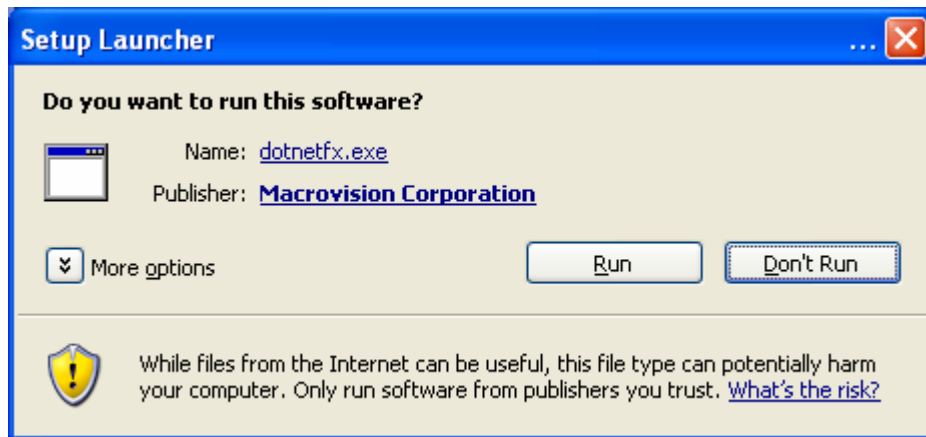
Step 1: Security warning screen will be displayed – please select Run



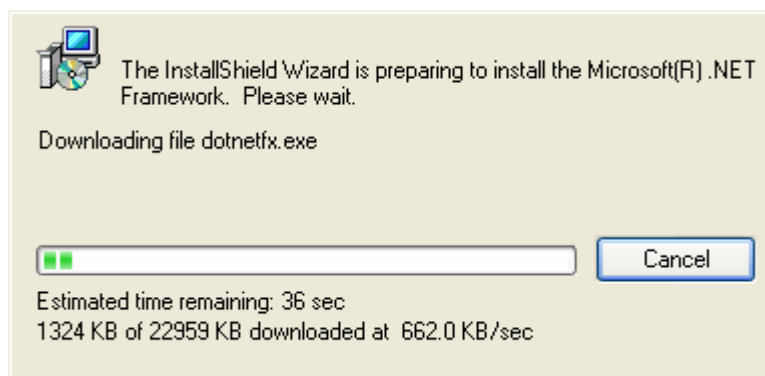
Please wait while the Operation system is checked



Step 2: Dependent on your machines settings you will see one of two screens appear. If Microsoft .Net is not installed on your machine, you will see the screen directly below, select Run to continue. If this screen does not appear please proceed to step 3



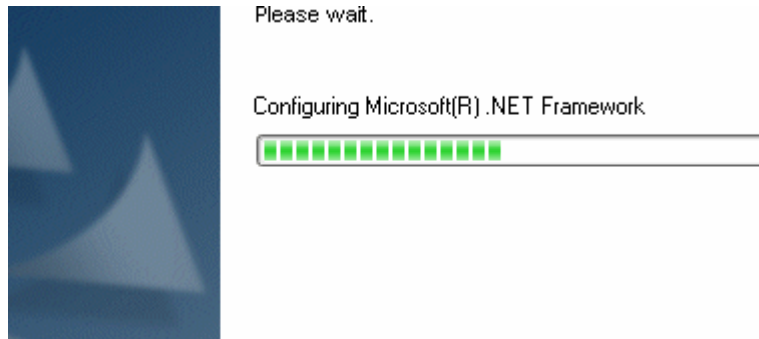
Please wait whilst the Shield Wizard installs



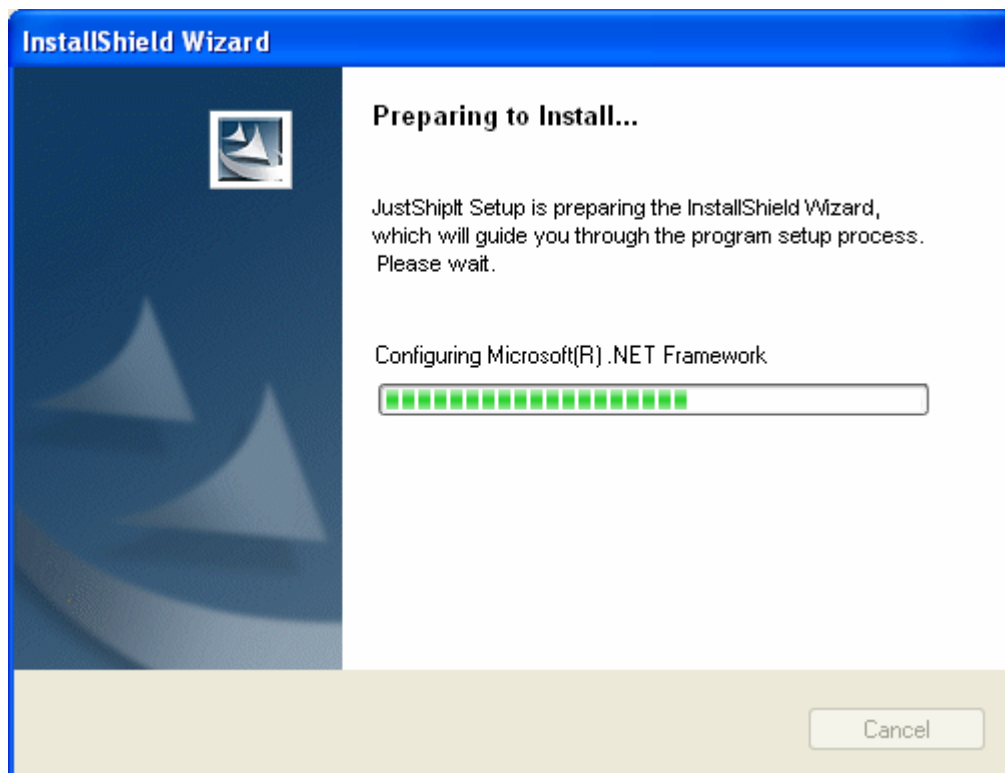
Please select Run on this second Security Warning screen, as shown below.



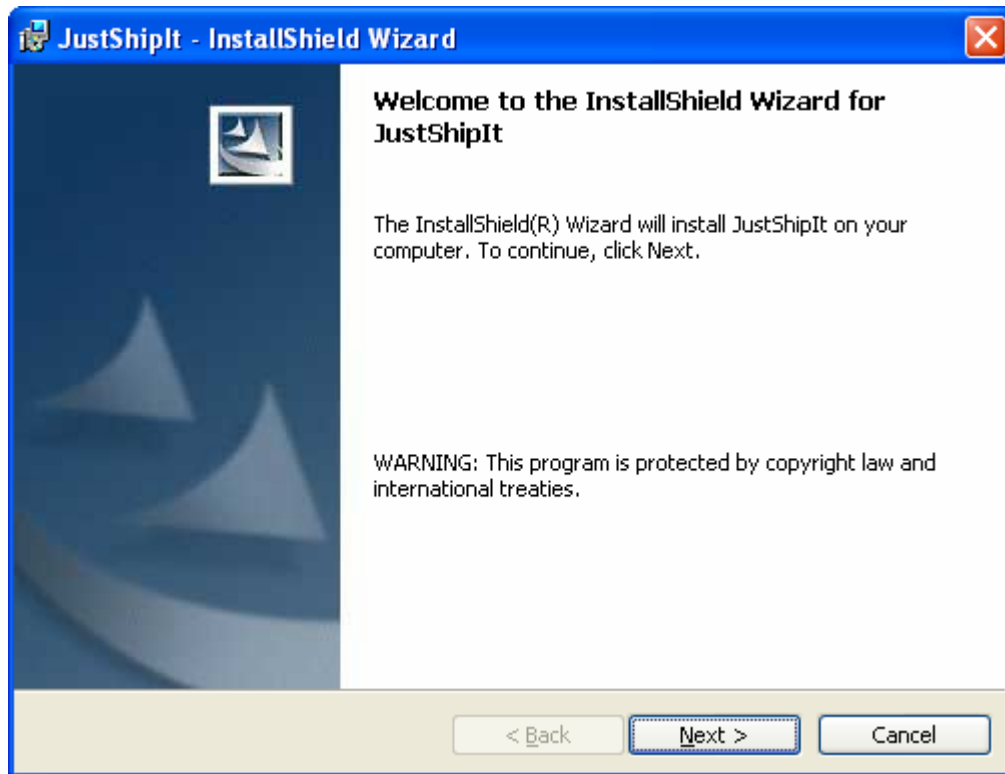
The system will go through a number of screens and you just need to sit tight – it won't take very long



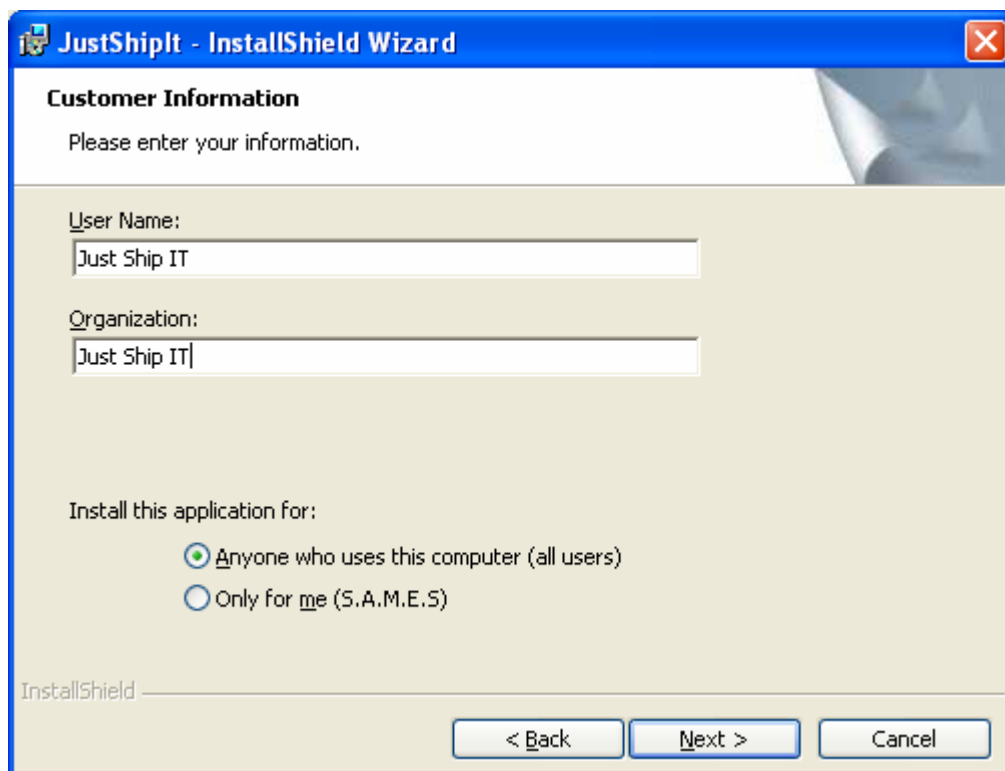
Nearly there!



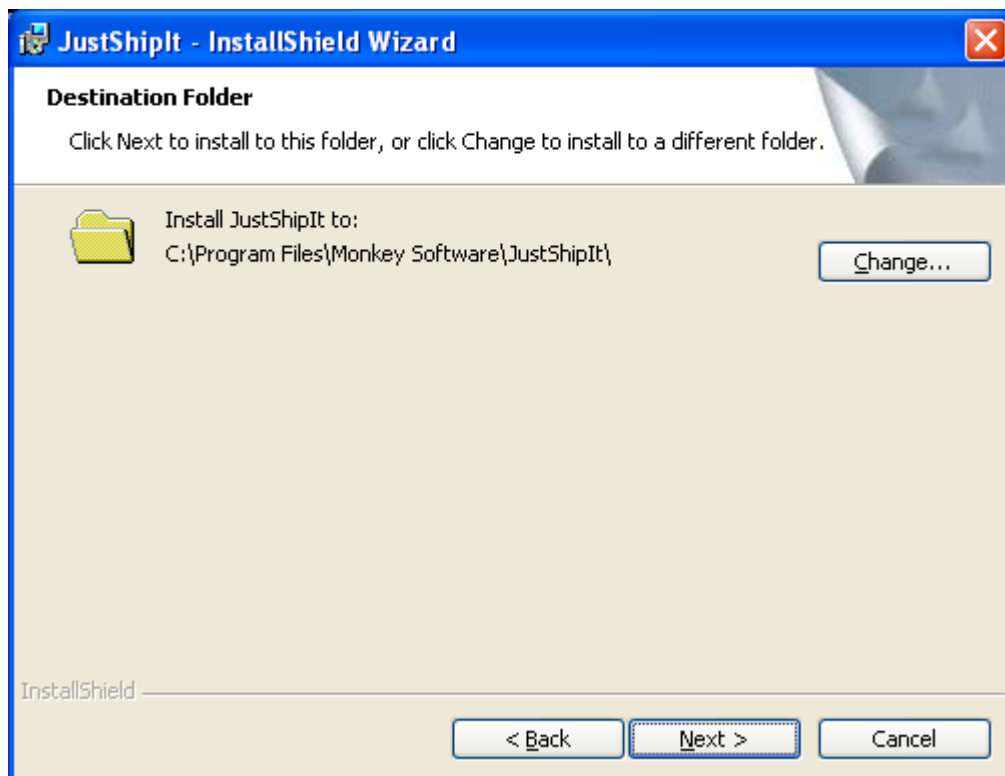
Step 3: Please select Next and proceed to step 4



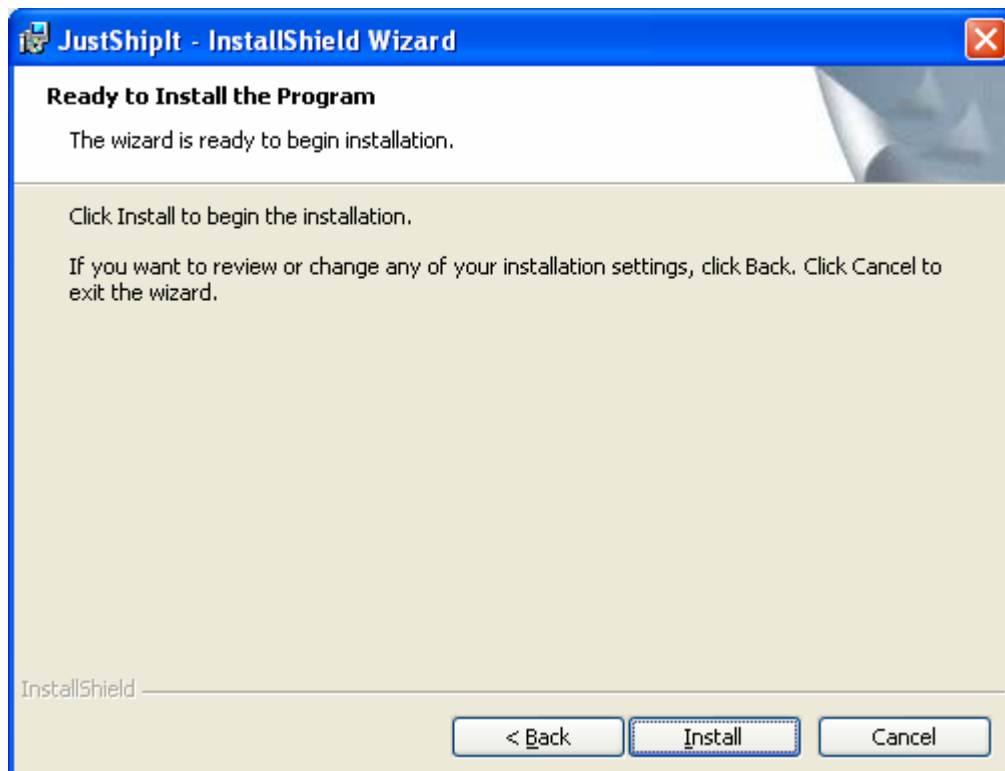
Step 4. Please select Next



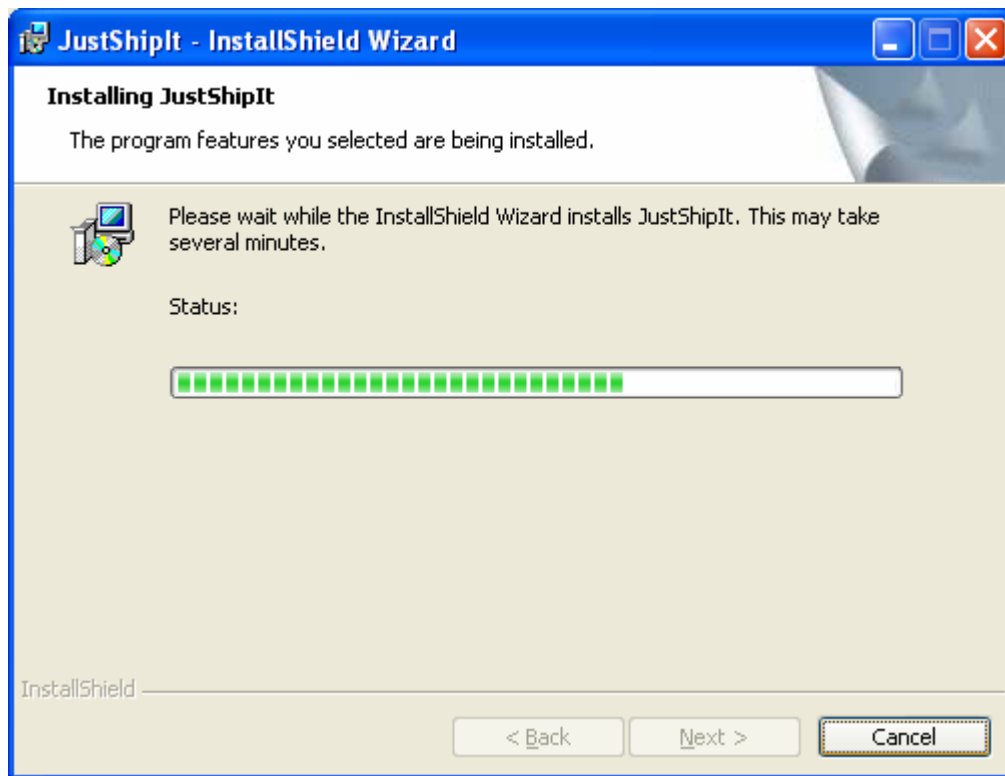
Step 5: Destination Folder screen – please select Next



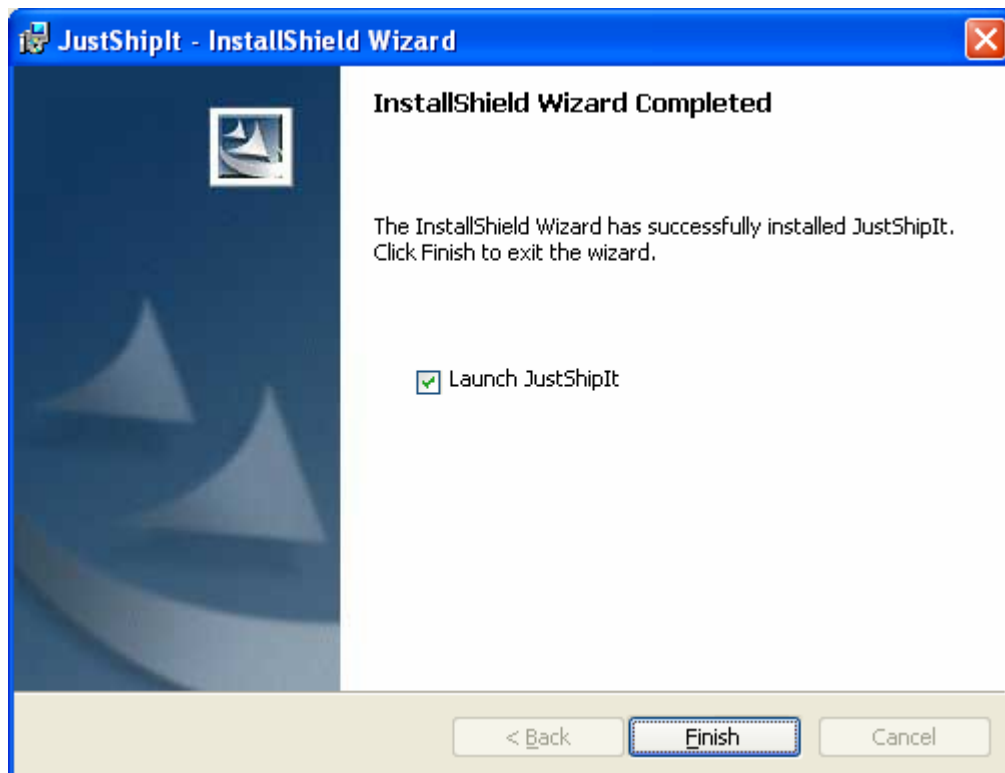
Step 6: Ready to install the program, select Install



Please allow the next screen to install, see screen example below



Step 7: To launch Just Ship IT, please select Finish





Just Ship IT

Checking for the local database availability

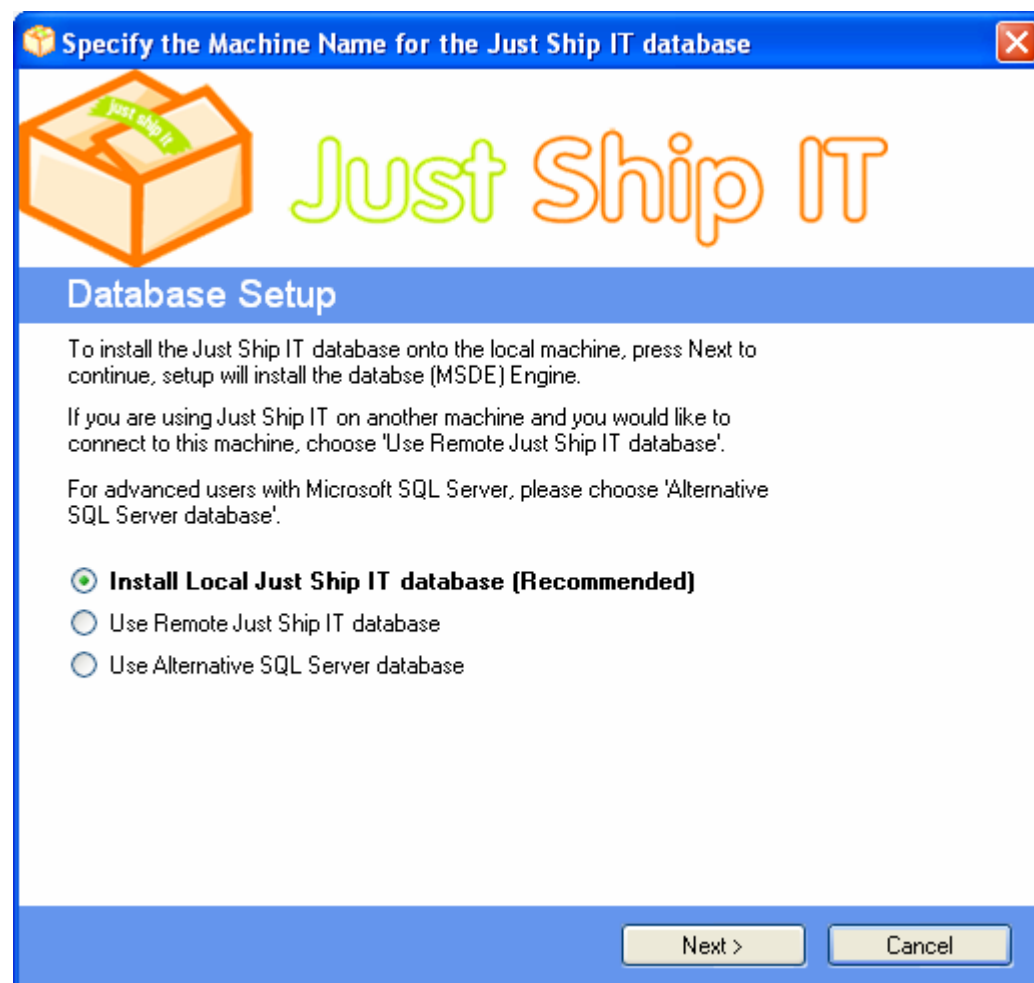
Step 8: You now have three options,

1. To install the Just Ship It database onto the local machine press next on this next screen, set up will install the database (MSDE) Engine.

Once chosen please jump to step 11

2. If you are using Just Ship It on another machine and you would like to connect to this machine, choose 'User Remote Just Ship It database' and proceed to ***Step 9***

3. For advanced users with Microsoft SQL Server, please choose 'alternative SQL Server database and proceed to ***Step 10***

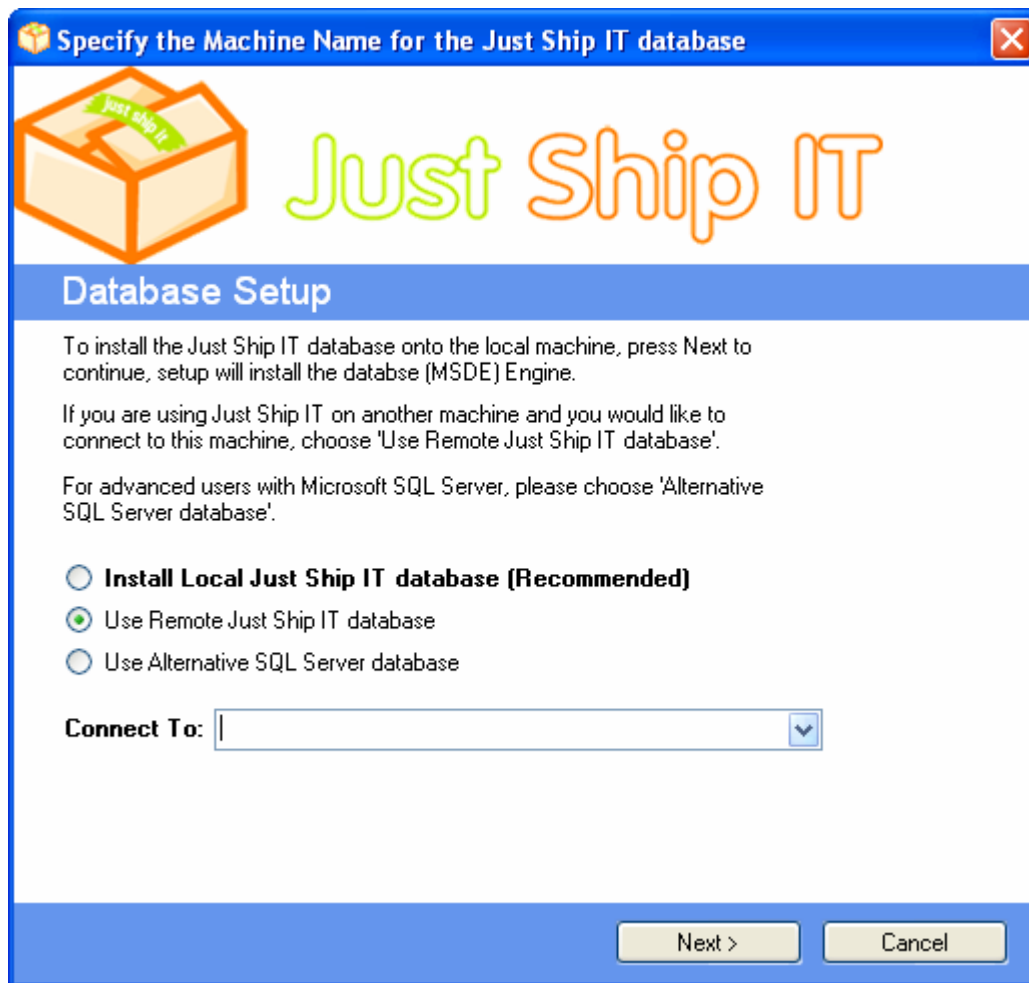


Step 8a: Downloading of the database


In Order for Just Ship IT to run, the database needs to be installed, this can take a few minutes to complete so please be patient.



Step 9. Enter your server name and select Next



Specify the Machine Name for the Just Ship IT database



Database Setup

To install the Just Ship IT database onto the local machine, press Next to continue, setup will install the database (MSDE) Engine.


If you are using Just Ship IT on another machine and you would like to connect to this machine, choose 'Use Remote Just Ship IT database'.

For advanced users with Microsoft SQL Server, please choose 'Alternative SQL Server database'.

Install Local Just Ship IT database (Recommended)


Use Remote Just Ship IT database

Use Alternative SQL Server database

Connect To: 

Step 10: Enter your SQL Server, login and password and select next

Specify the Machine Name for the Just Ship IT database



Database Setup

To install the Just Ship IT database onto the local machine, press Next to continue, setup will install the database (MSDE) Engine.

If you are using Just Ship IT on another machine and you would like to connect to this machine, choose 'Use Remote Just Ship IT database'.

For advanced users with Microsoft SQL Server, please choose 'Alternative SQL Server database'.

Install Local Just Ship IT database (Recommended)

Use Remote Just Ship IT database

Use Alternative SQL Server database

Connect To:

Login:

Password:

Step 11a Setup Wizard: Once the application has been installed, you will be required to create a unique username and password, this allows your details to be kept safe and secure and also manage your account details later. One Just Ship IT Account is needed to log onto the application, and it allows you to configure multiple stores within the account.

Choose Signup for a new account if you have never registered Just Ship IT before, or choose Connect using Existing account if you have already registered.



Step 11b Setup Wizard (Username & Password):

Enter a unique username and password, this allows your details to be kept safe and secure and also manage your account details later.

One Just Ship IT Account is needed to log onto the application, and it allows you to configure multiple stores within the account.

Account Wizard

Just Ship IT

Create a Username & Password

Please enter your details

These details will be held on our secure server and you will need these in order to log onto the application and our account management.

Please ensure that you keep these details in a safe place.

Username Same as email

Email *

Password *

Confirm password

First Name *

Last Name *

Company Name

To continue, press Next

< Back Next > Cancel

Step 11c Setup Wizard (Store management): Each store is provided so that you can keep all of your data separate, you can assign one eBay account to each store.



Step 11d Setup Wizard (Options): If you would like to configure the store for eBay integration, click eBay if just a basic store then retain on None and click Next to proceed to step 11h

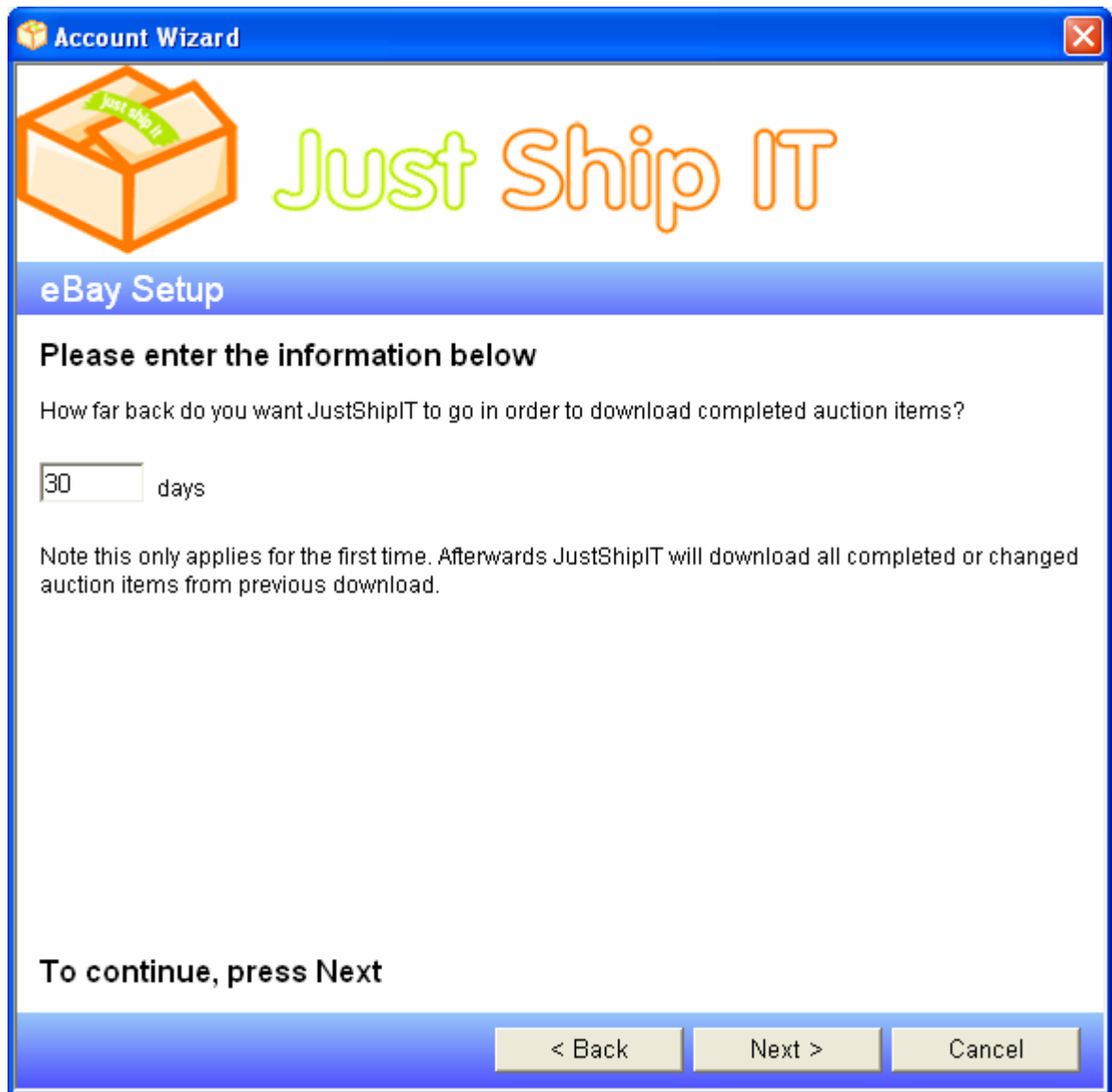


The screenshot shows a window titled "Account Wizard" with a close button in the top right corner. The window features the "Just Ship IT" logo, which consists of a 3D box icon with a green arrow and the text "Just Ship IT" in a stylized font. Below the logo is a blue header bar with the text "Account Integration Options - ebay". The main content area contains the following text and elements:


- Please choose one of the following systems below**
- Please choose if you would like to integrate to one of the following systems below
- Radio button selection:
 - None
 - eBay
- Text input field labeled "Store Name" containing the text "darren@ardener.co.uk".

At the bottom of the window, there is a blue bar with the text "To continue, press Next" and three buttons: "< Back", "Next >", and "Cancel".

Step 11e Setup Wizard (eBay Options): Specify the number of days you wish to retrieve data for from your eBay account.



Account Wizard



Just Ship IT

eBay Setup

Please enter the information below

How far back do you want JustShipIT to go in order to download completed auction items?

days

Note this only applies for the first time. Afterwards JustShipIT will download all completed or changed auction items from previous download.

To continue, press Next

< Back Next > Cancel

Step 11f Setup Wizard (eBay Token): To allow us to contact eBay and retrieve your details, you need to create a token, your details are kept safe on our secure server, and no passwords are retained by Just Ship IT.

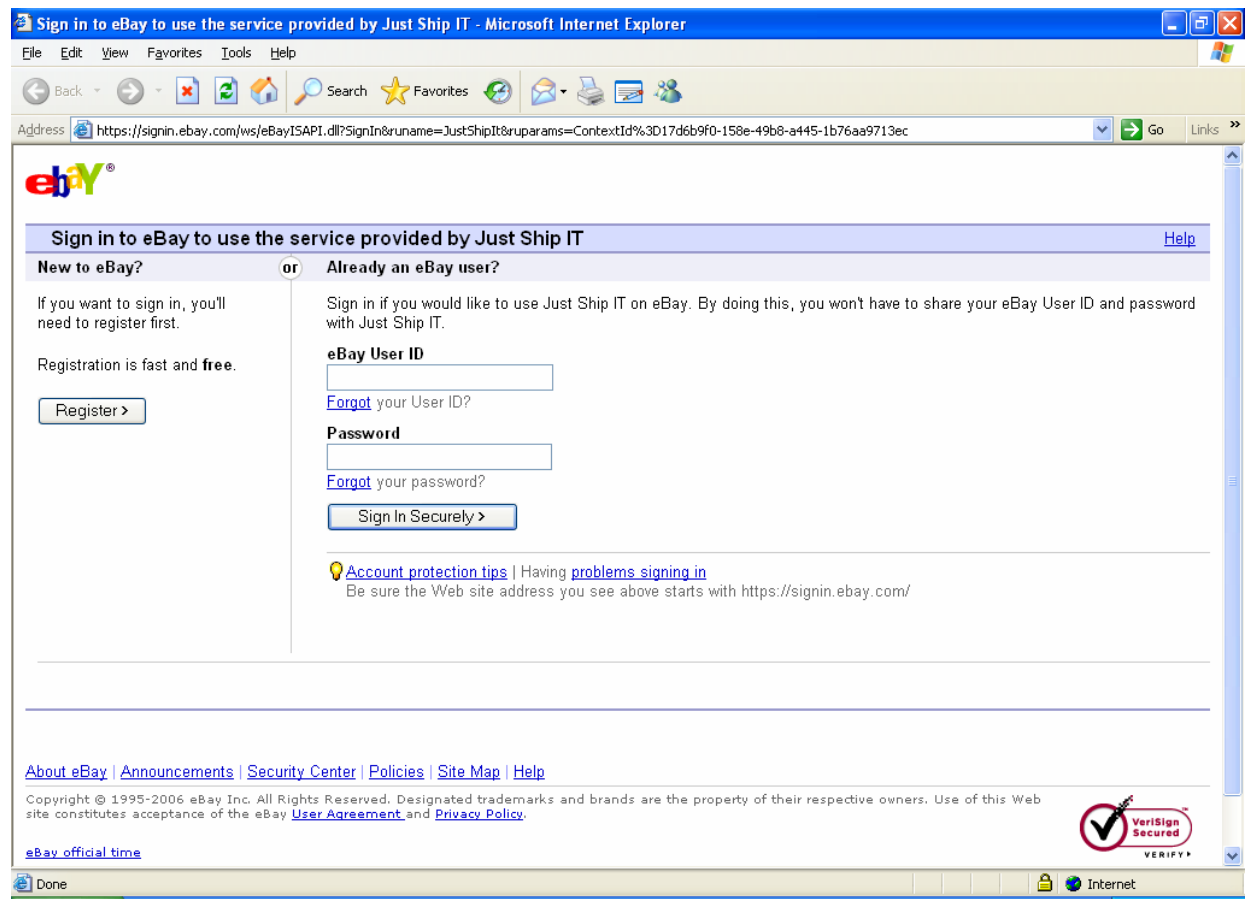
To create a token click 'Create Token Now'



Step 11g Setup Wizard (eBay Token): You are now redirected to the eBay Sign in Page, enter your username and password here

To create a token click 'Sign In Securely'. And then 'Agree and Continue' to proceed on the following page.

Once completed you will be notified that the Token has been Accepted, and proceed with the next step of the setup wizard.



Step 11h Setup Wizard (Store Confirmation): Once completed, verify your account details here, these address details will be used within Just Ship IT for your parcels etc..

To finish press 'Next'.

Account Wizard

Just Ship IT

Contact Information

Enter the contact information for your Store

Store Name: Company Name:

First Name: Last Name:

Address Line 1:

Address Line 2:

Address Line 3:

Country:

Post Code:

Phone number: Ext:

Email Address:

Web URL:

Company Reg. Num.:

VAT Reg. Num.: VAT Code:

To continue, press Next

< Back Next > Cancel

Step 11i: The Final Confirmation,

To finish Click 'Proceed'

The Application will then perform a synchronisation from our license server for the first time and then it will be ready for use, to start off, click 'Download' to download your eBay Items



Step 12: On the next restarts of Just Ship IT you will see the following logon screen, simply enter your username and password and press Logon to load Just Ship IT



The image shows a login screen for 'Just Ship IT'. On the left is a 3D illustration of a cardboard box with the 'Just Ship IT' logo on top. Below the box are two yellow buttons: 'Setup' and 'Forgotten Password'. To the right of the box is the 'Just Ship IT' logo in large, stylized letters. Below the logo is the text 'Please login using the username and password supplied'. There are two input fields: 'User name' with the text 'esandbox10539' and 'Password' with a masked password 'xxxxxxxxxx'. To the right of the 'User name' field is a yellow 'Cancel' button, and to the right of the 'Password' field is a yellow 'Login' button.

Enjoy.... If you have any problems please contact support@justshipit.co.uk